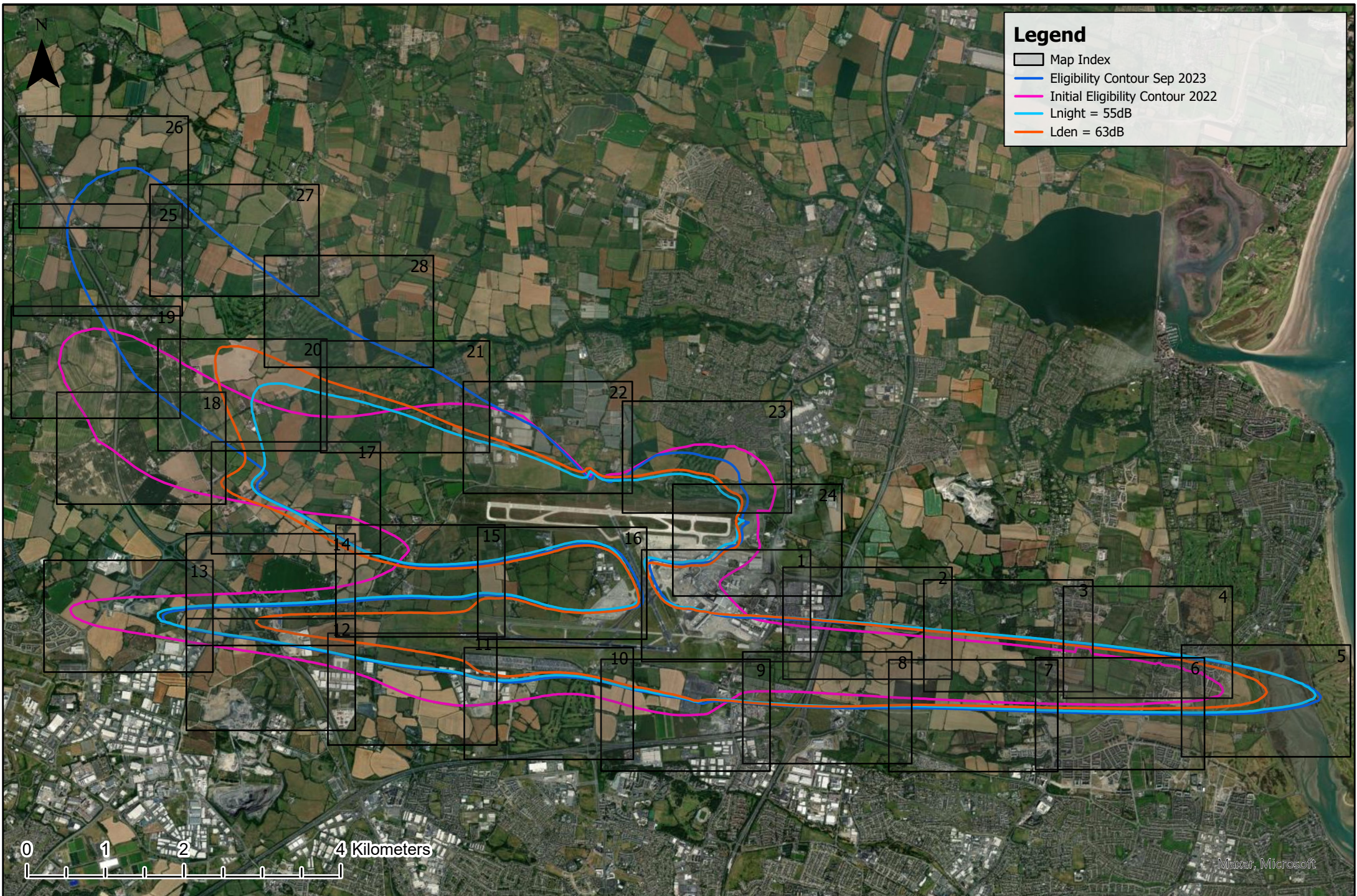


**Legend**

- Eligibility Contour Sep 2023
- Initial Eligibility Contour 2022
- Lnight = 55dB
- Lden = 63dB

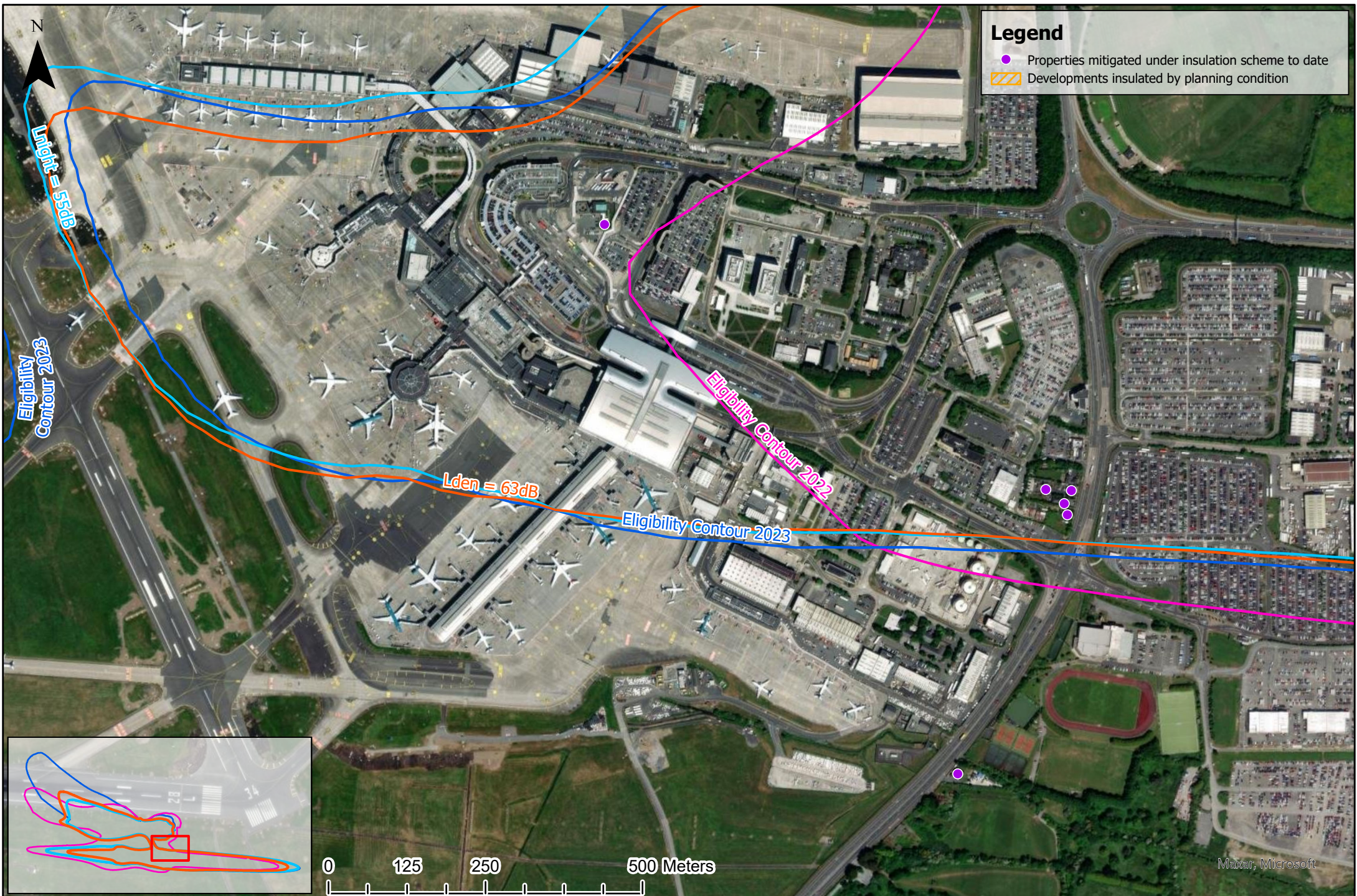
Comparison between Regulatory Decision 3rd Condition and F.I. Response  
Including 55dB (Lnight) and 63 dB (Lden) contours





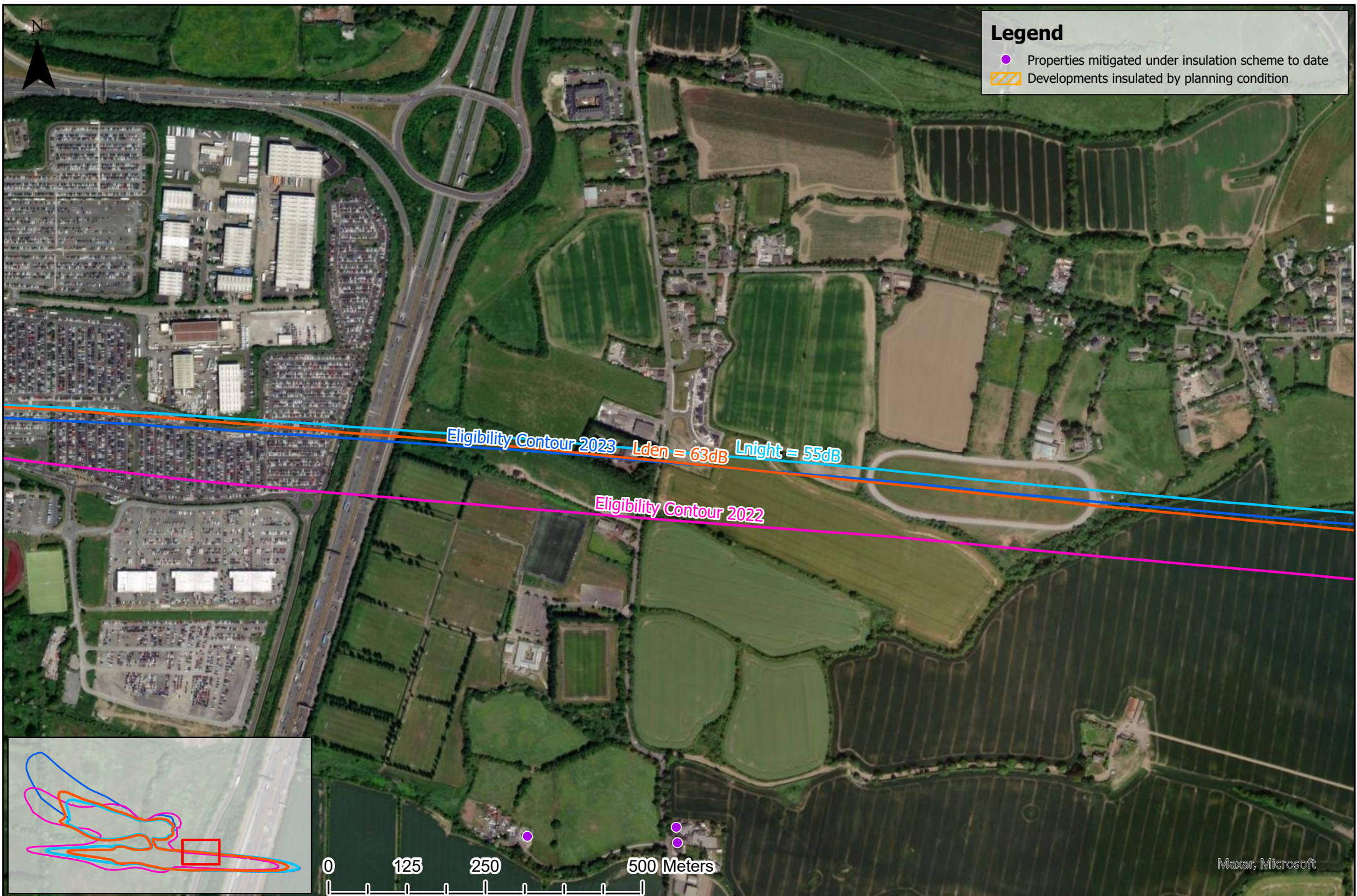
Comparison between Regulatory Decision 3rd Condition and F.I. Response  
Including 55dB (Lnight) and 63 dB (Lden) contours





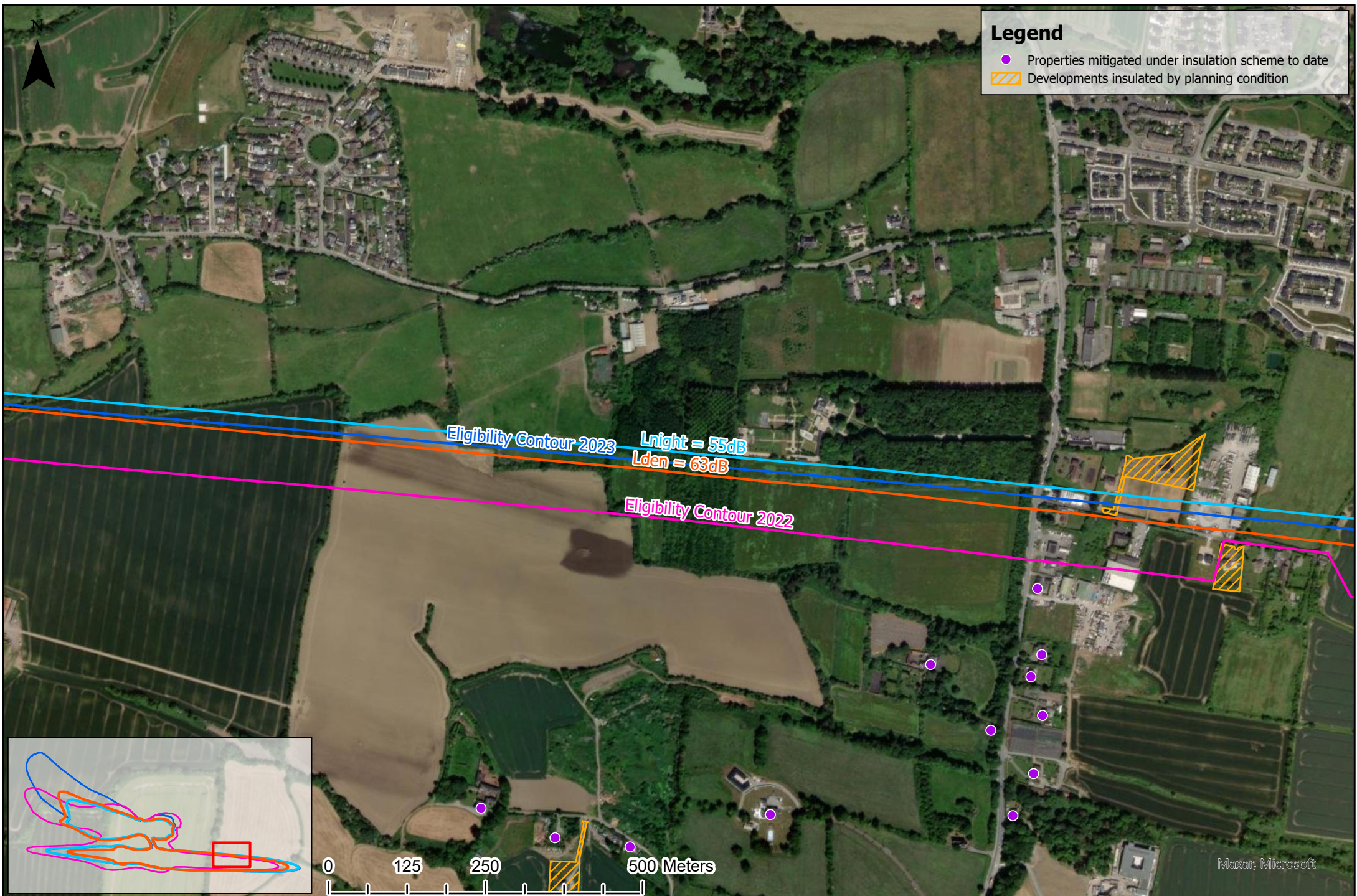
Comparison between Regulatory Decision 3rd Condition and F.I. Response  
Including 55dB (Lnight) and 63 dB (Lden) contours





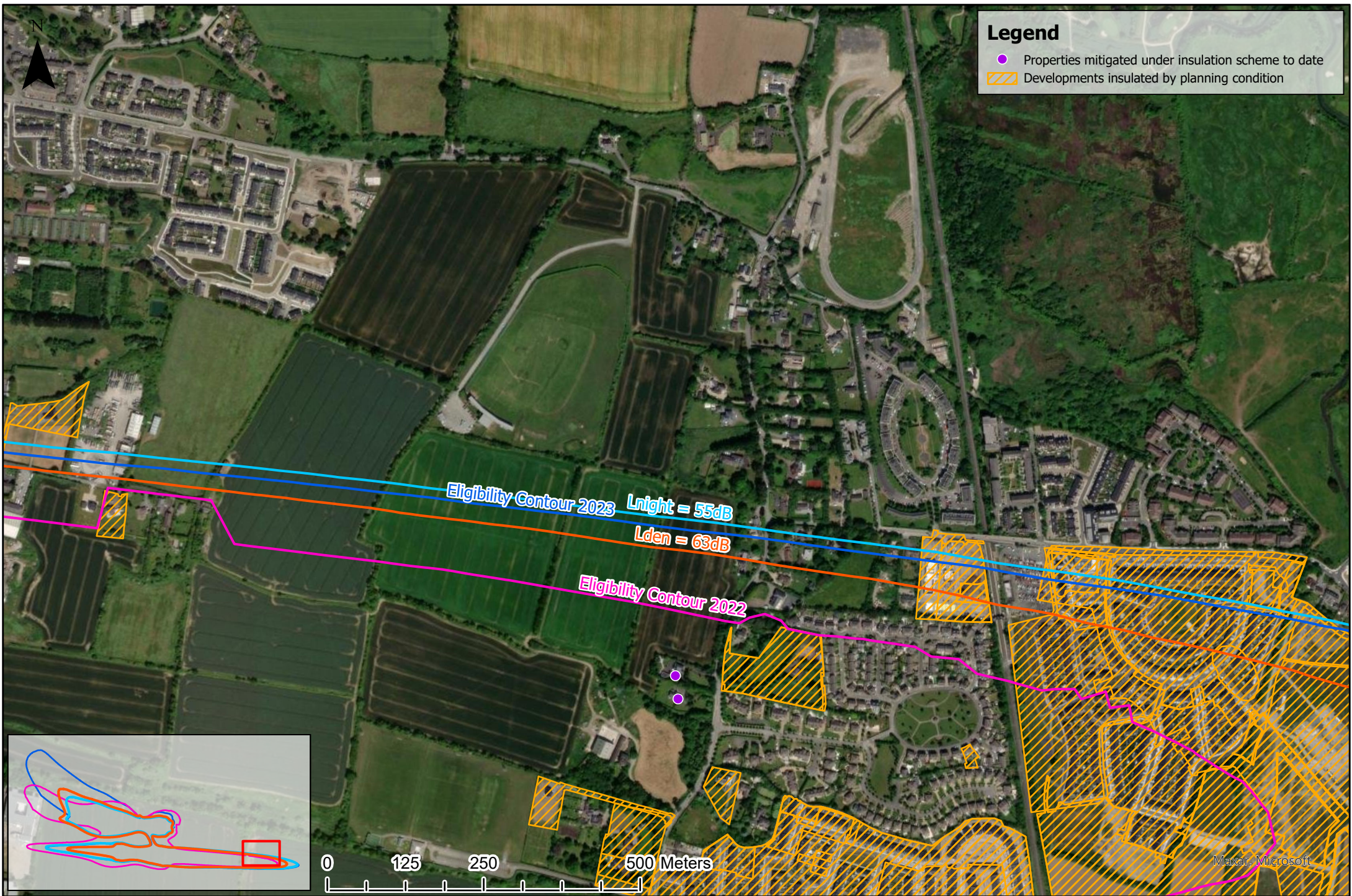
Comparison between Regulatory Decision 3rd Condition and F.I. Response  
Including 55dB (Lnight) and 63 dB (Lden) contours





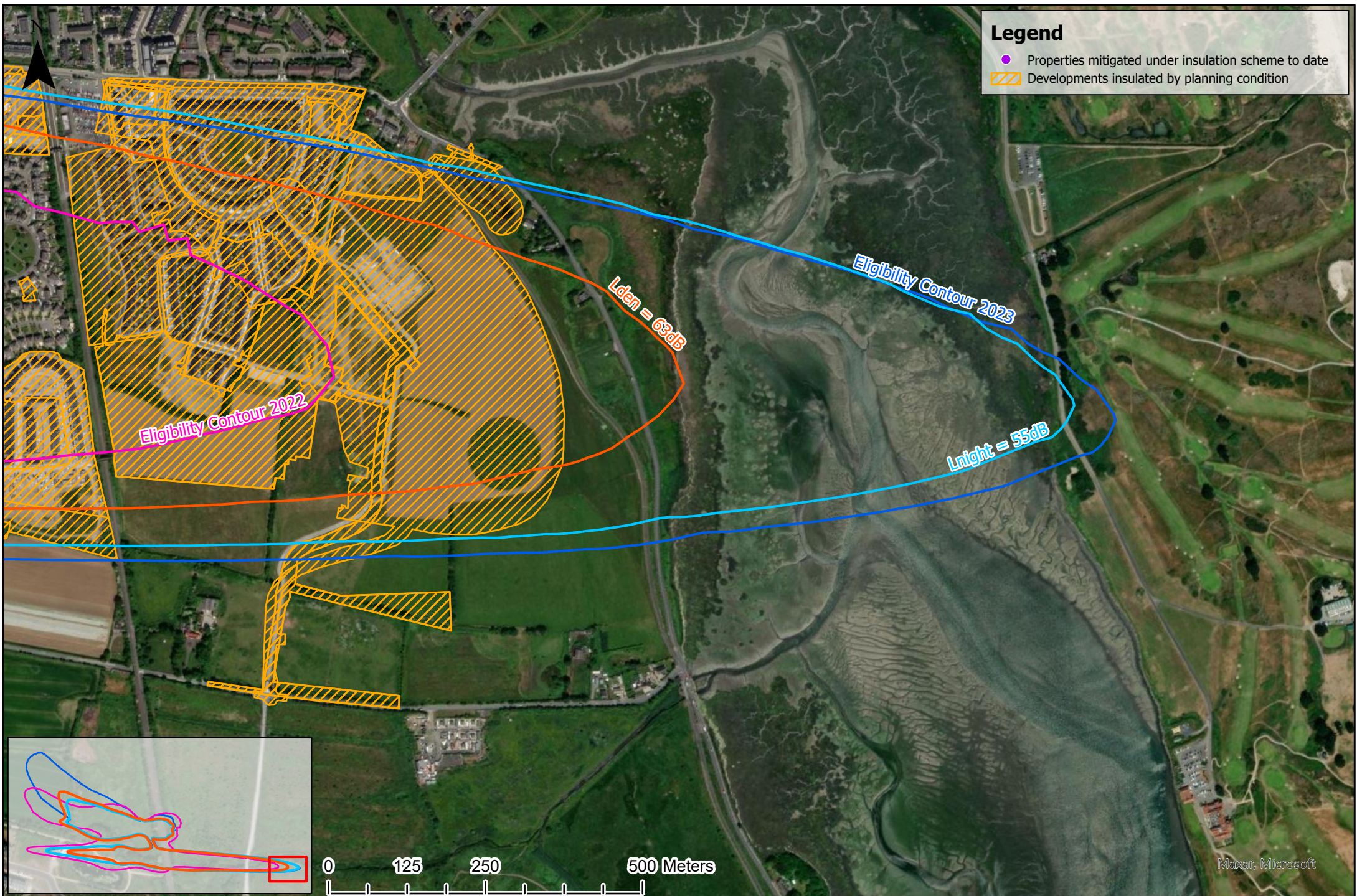
Comparison between Regulatory Decision 3rd Condition and F.I. Response  
Including 55dB (Lnight) and 63 dB (Lden) contours





Comparison between Regulatory Decision 3rd Condition and F.I. Response  
Including 55dB ( $L_{night}$ ) and 63 dB ( $L_{den}$ ) contours





## Legend

- Properties mitigated under insulation scheme to date
- ▨ Developments insulated by planning condition

Eligibility Contour 2022

Lden = 63dB

Eligibility Contour 2023

Lnight = 55dB

0 125 250 500 Meters

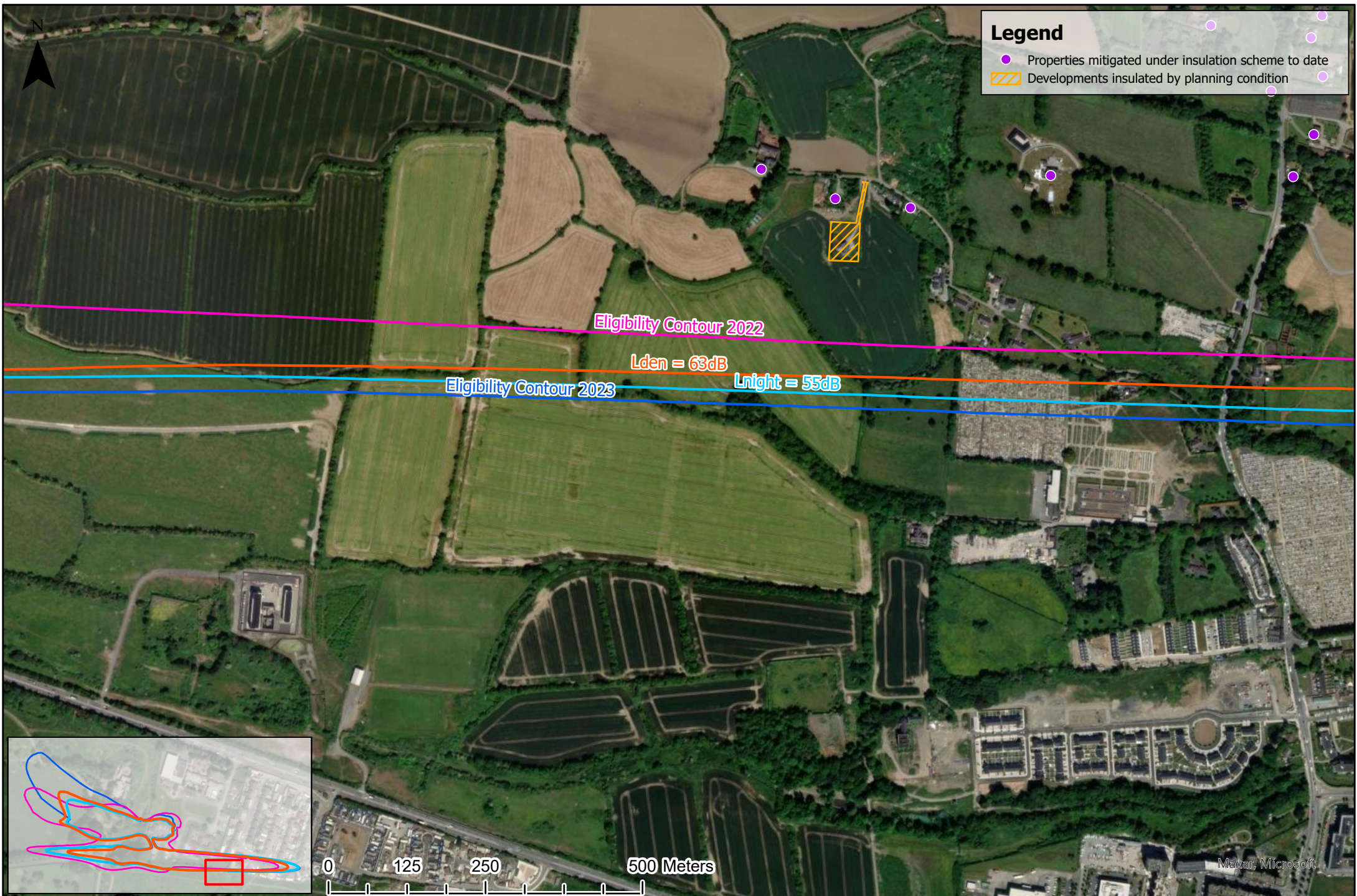
Comparison between Regulatory Decision 3rd Condition and F.I. Response  
Including 55dB (Lnight) and 63 dB (Lden) contours





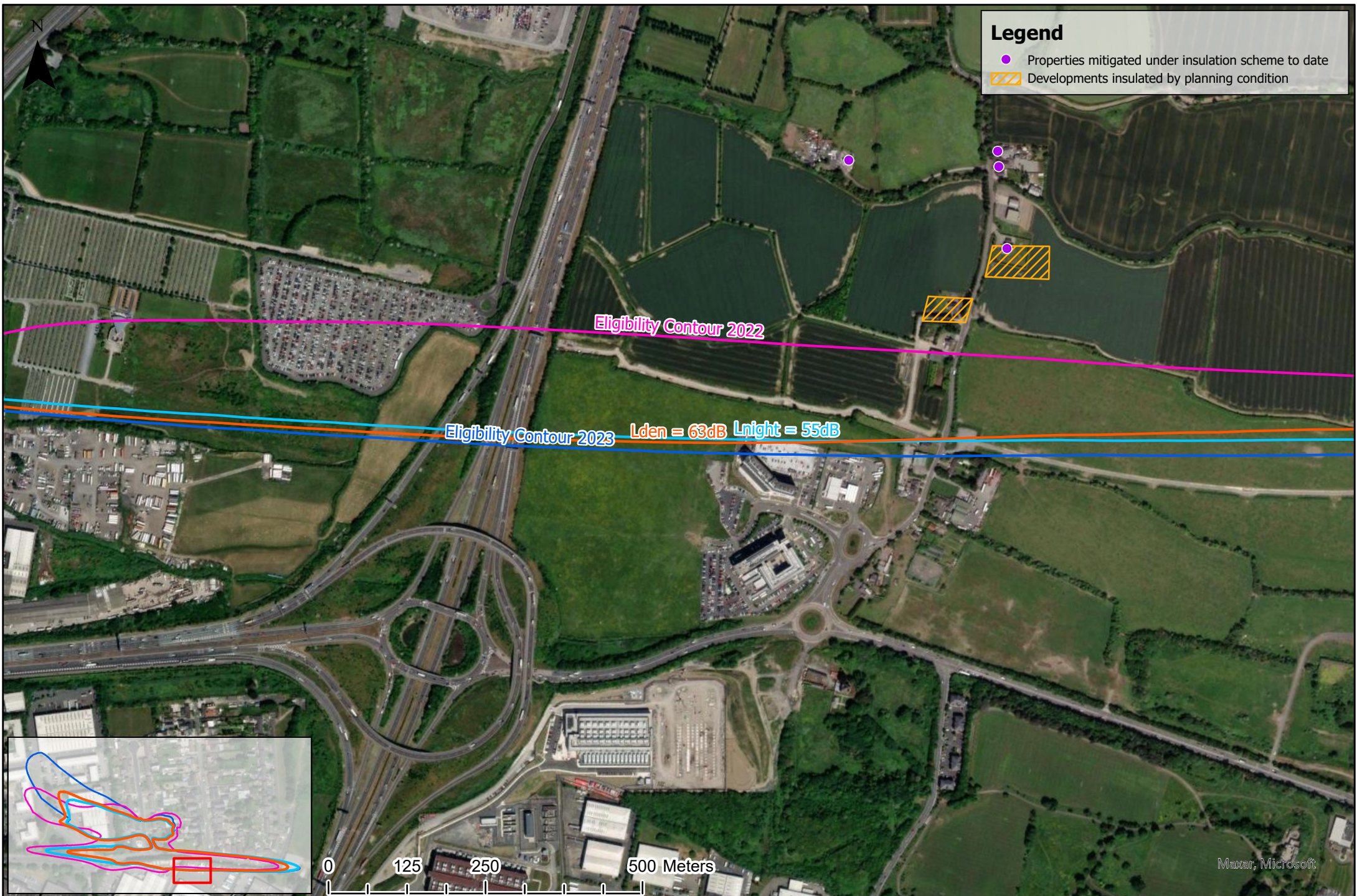
Comparison between Regulatory Decision 3rd Condition and F.I. Response  
Including 55dB ( $L_{night}$ ) and 63 dB ( $L_{den}$ ) contours





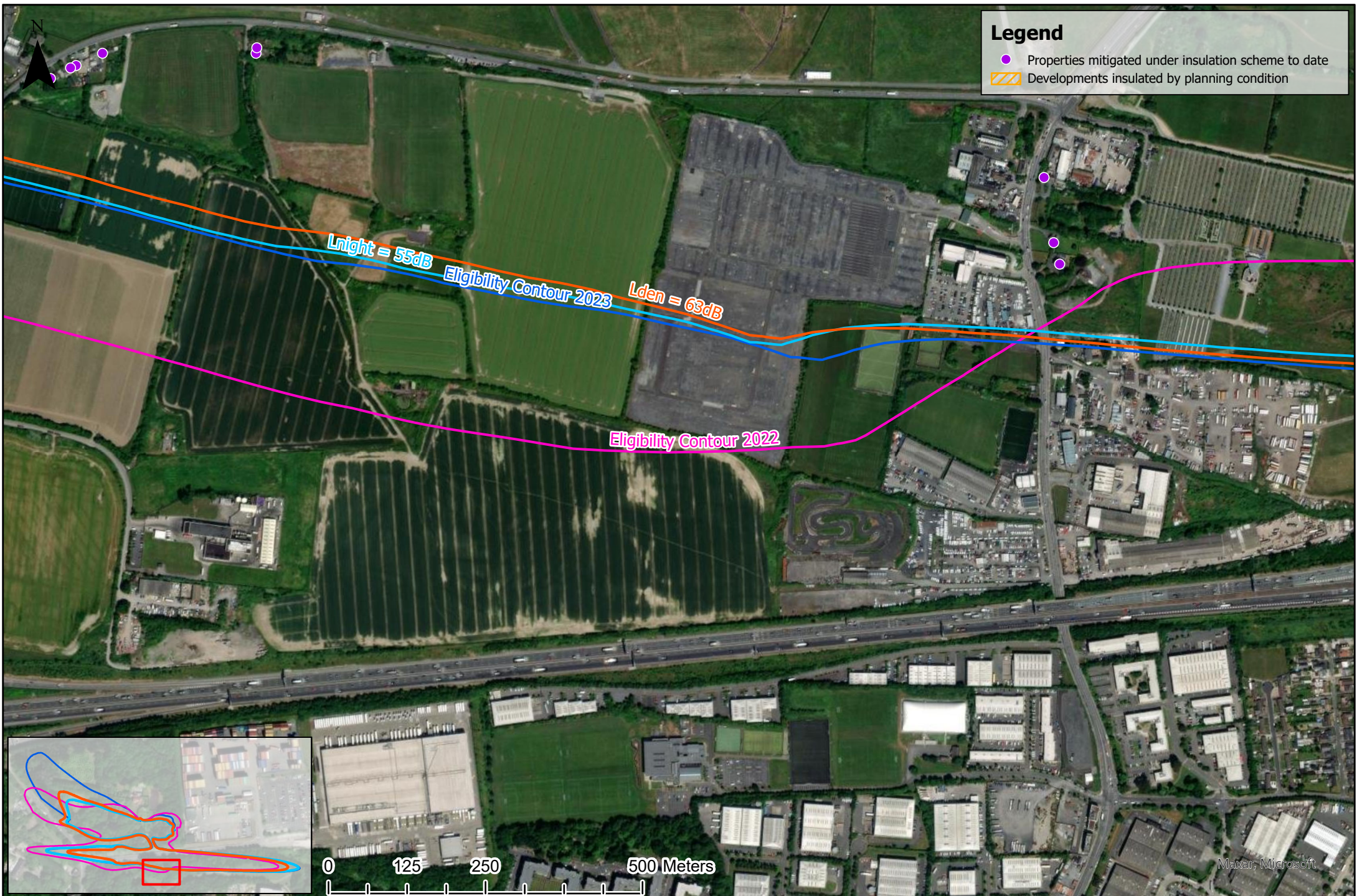
Comparison between Regulatory Decision 3rd Condition and F.I. Response  
Including 55dB (Lnight) and 63 dB (Lden) contours





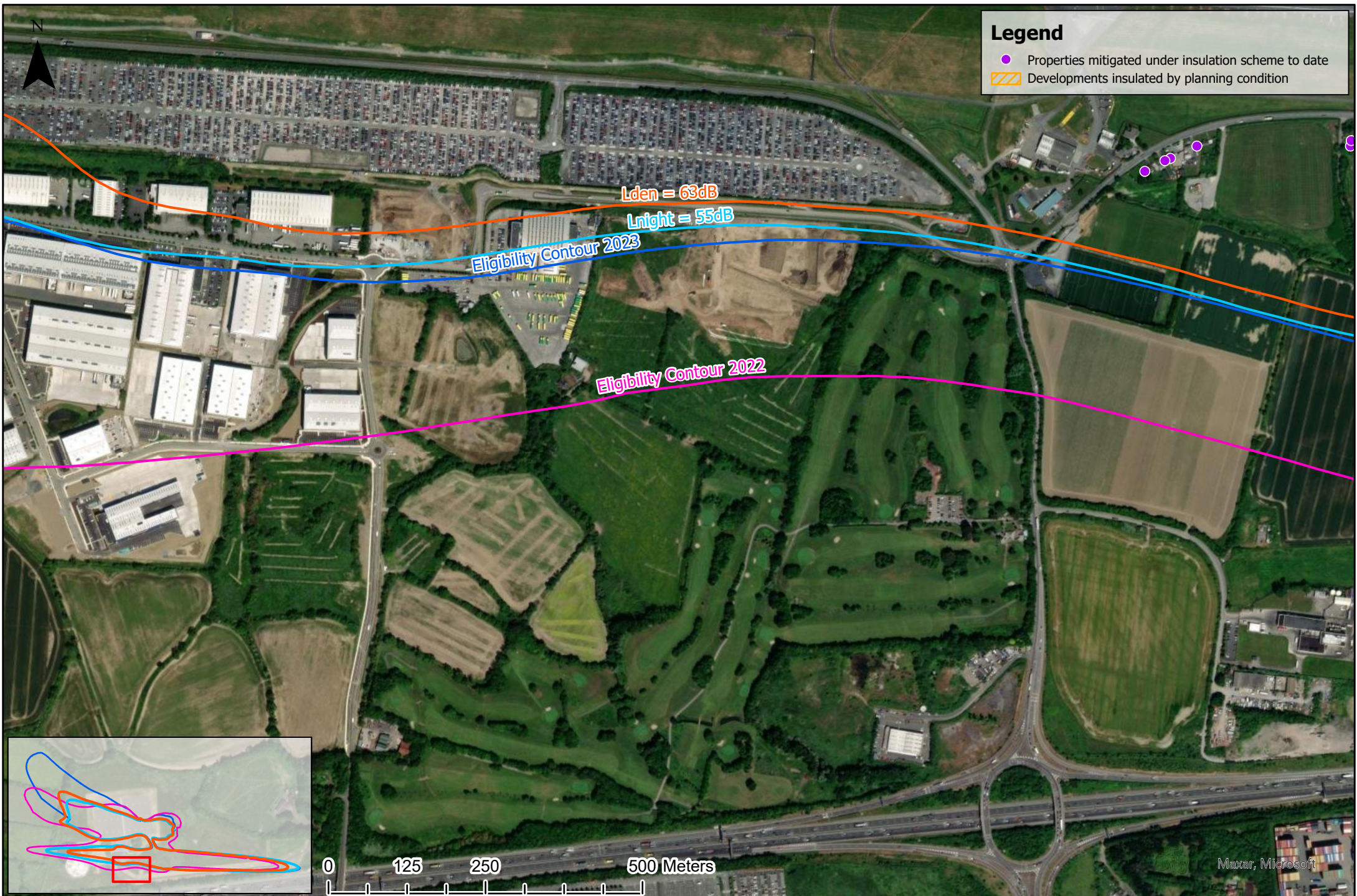
Comparison between Regulatory Decision 3rd Condition and F.I. Response  
Including 55dB (Lnight) and 63 dB (Lden) contours





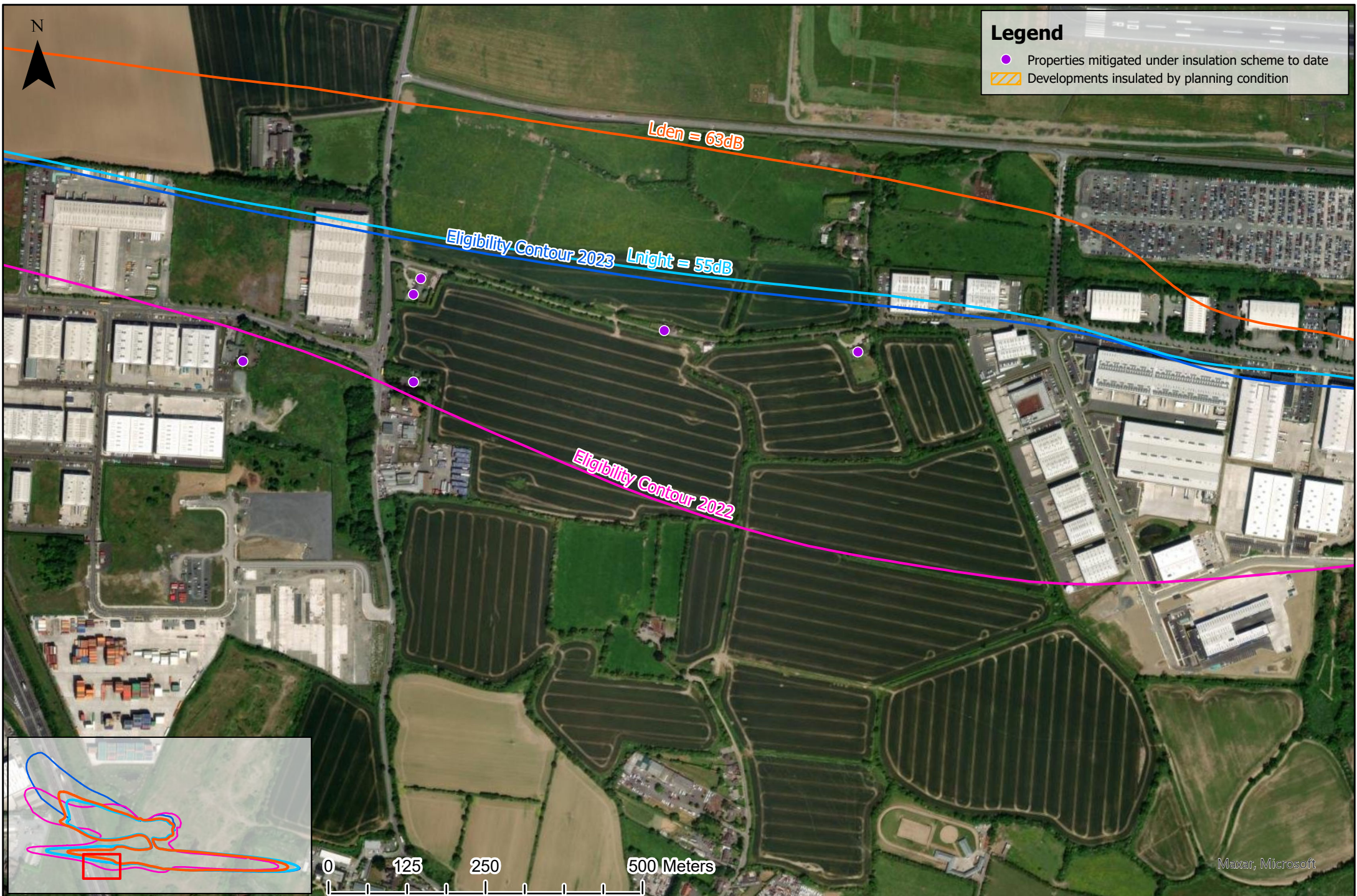
Comparison between Regulatory Decision 3rd Condition and F.I. Response  
Including 55dB (Lnight) and 63 dB (Lden) contours





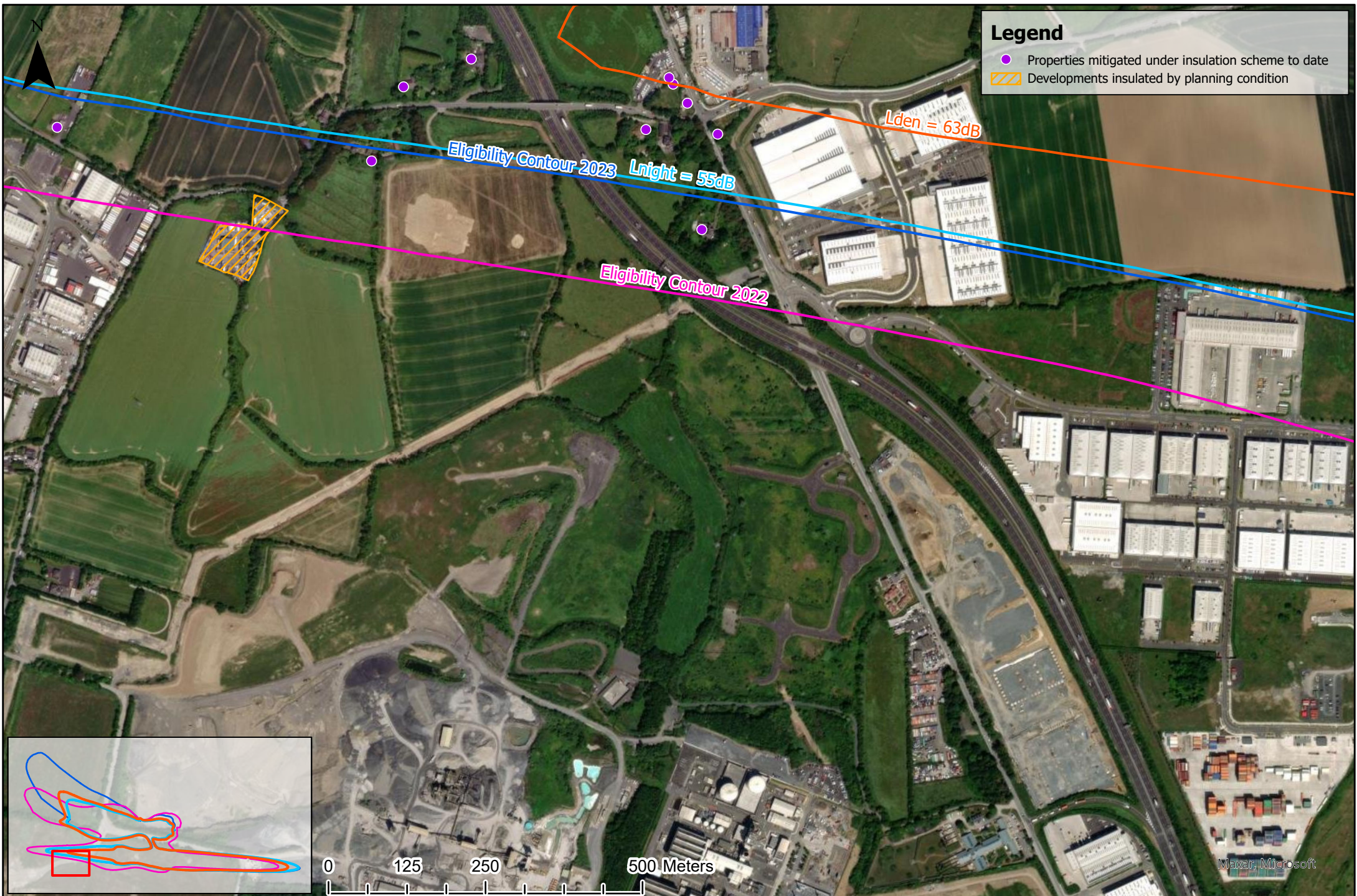
Comparison between Regulatory Decision 3rd Condition and F.I. Response  
Including 55dB (Lnight) and 63 dB (Lden) contours





Comparison between Regulatory Decision 3rd Condition and F.I. Response  
Including 55dB (Lnight) and 63 dB (Lden) contours



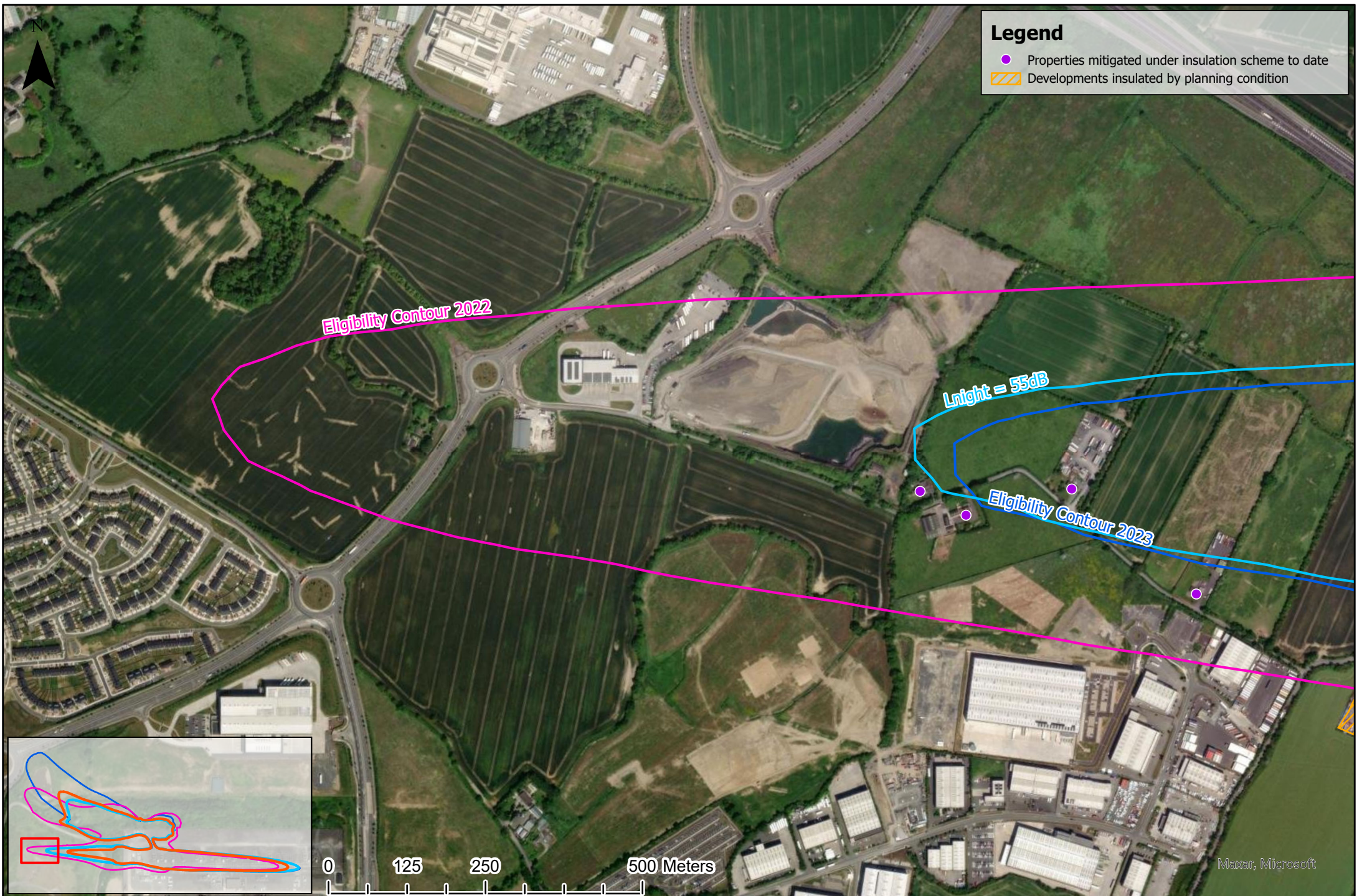


**Legend**

- Properties mitigated under insulation scheme to date
- ▨ Developments insulated by planning condition

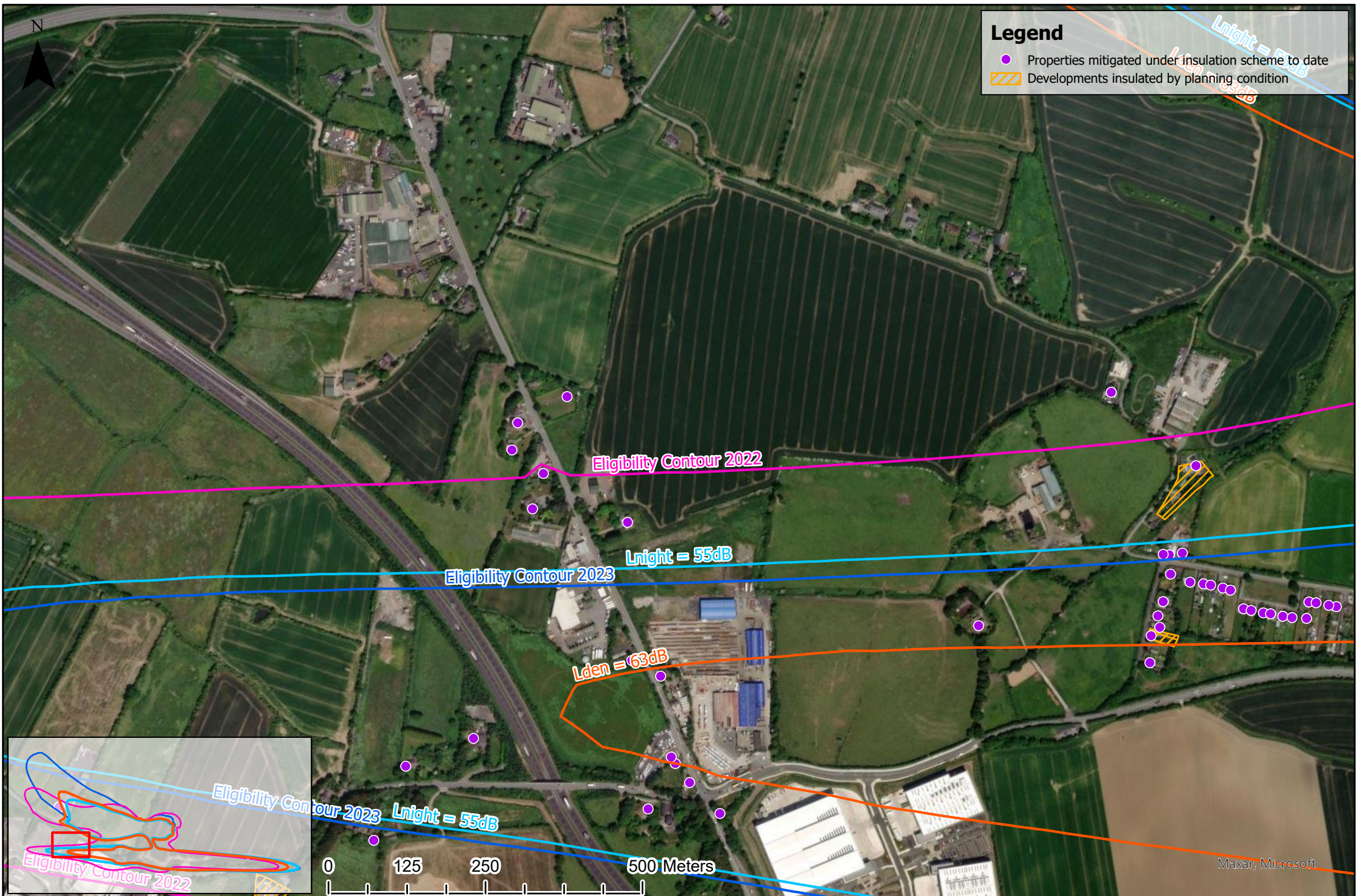
Comparison between Regulatory Decision 3rd Condition and F.I. Response  
Including 55dB (Lnight) and 63 dB (Lden) contours





Comparison between Regulatory Decision 3rd Condition and F.I. Response  
Including 55dB (Lnight) and 63 dB (Lden) contours





Comparison between Regulatory Decision 3rd Condition and F.I. Response  
Including 55dB (Lnight) and 63 dB (Lden) contours

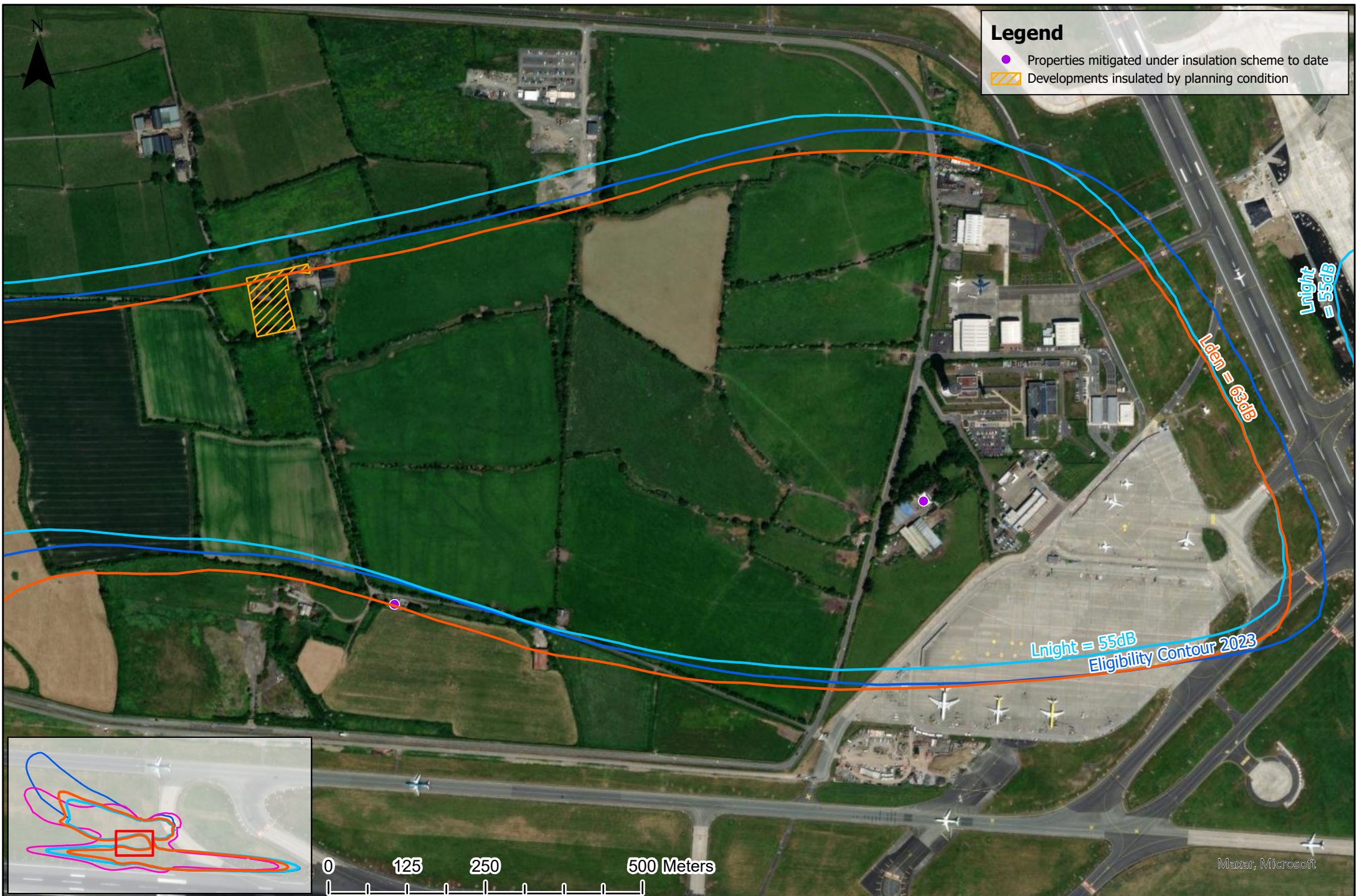




### Legend

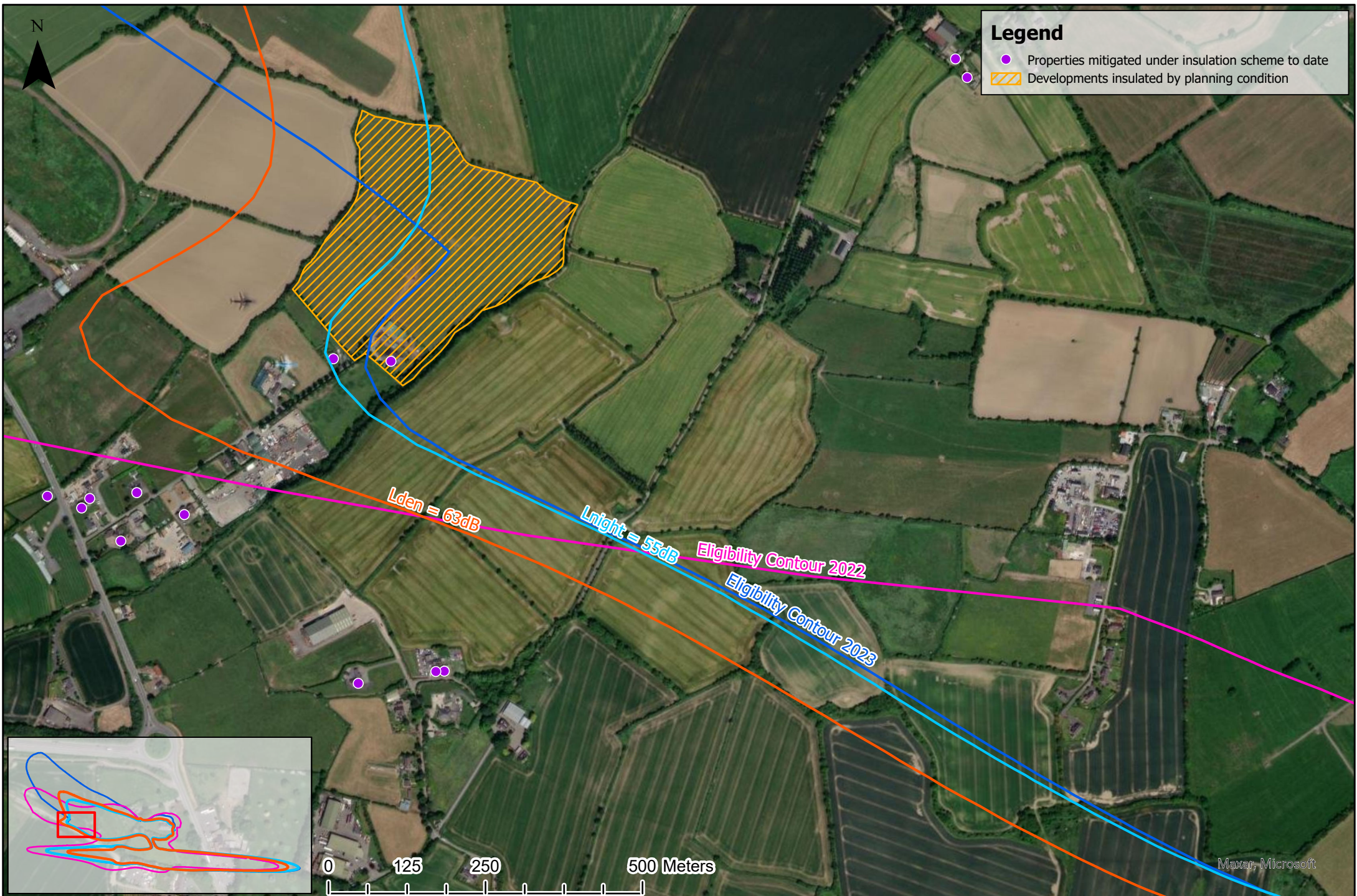
- Properties mitigated under insulation scheme to date
- ▨ Developments insulated by planning condition





Comparison between Regulatory Decision 3rd Condition and F.I. Response  
Including 55dB (Lnight) and 63 dB (Lden) contours





Comparison between Regulatory Decision 3rd Condition and F.I. Response  
Including 55dB ( $L_{night}$ ) and 63 dB ( $L_{den}$ ) contours



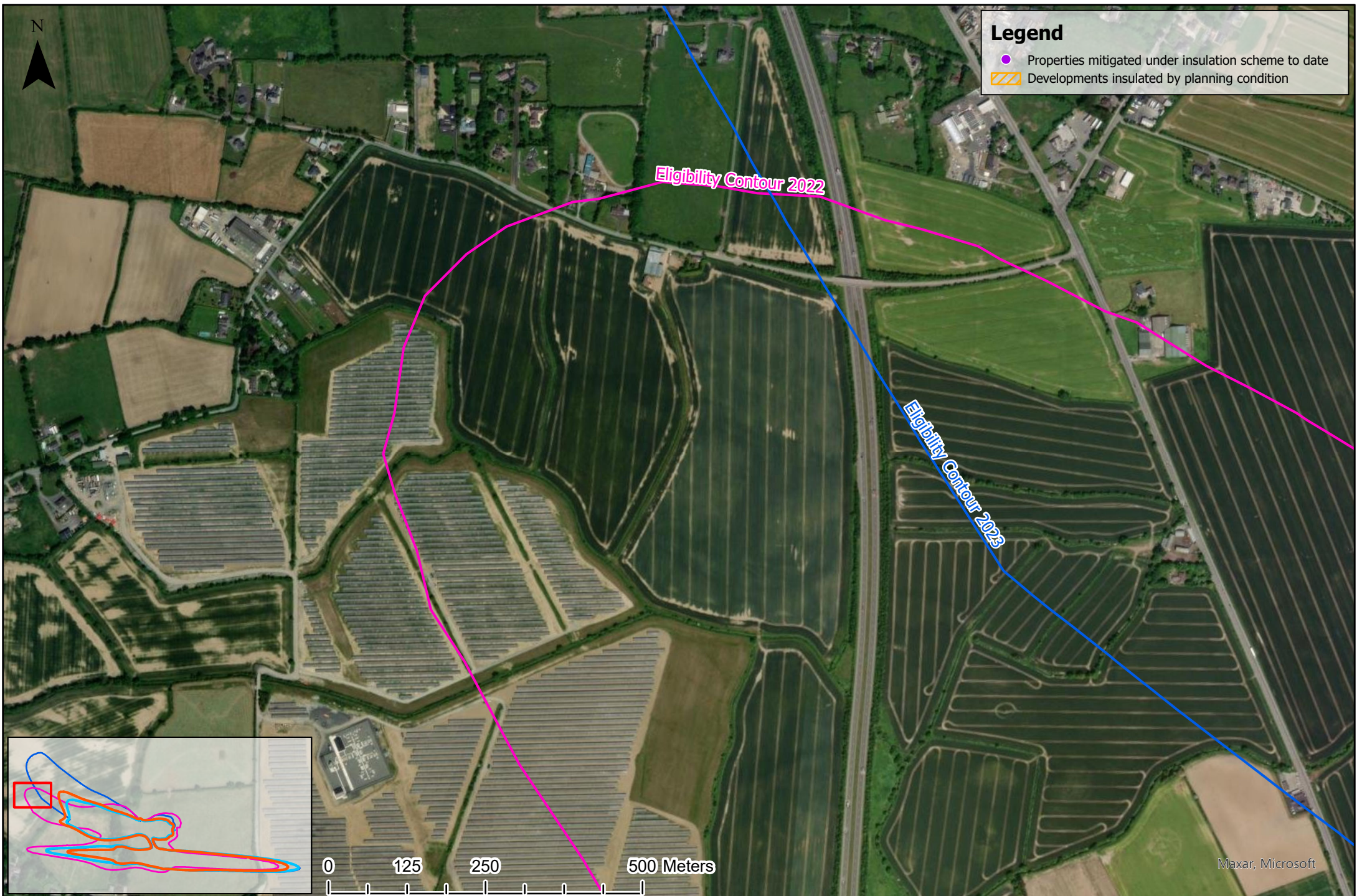


**Legend**

- Properties mitigated under insulation scheme to date
- ▨ Developments insulated by planning condition

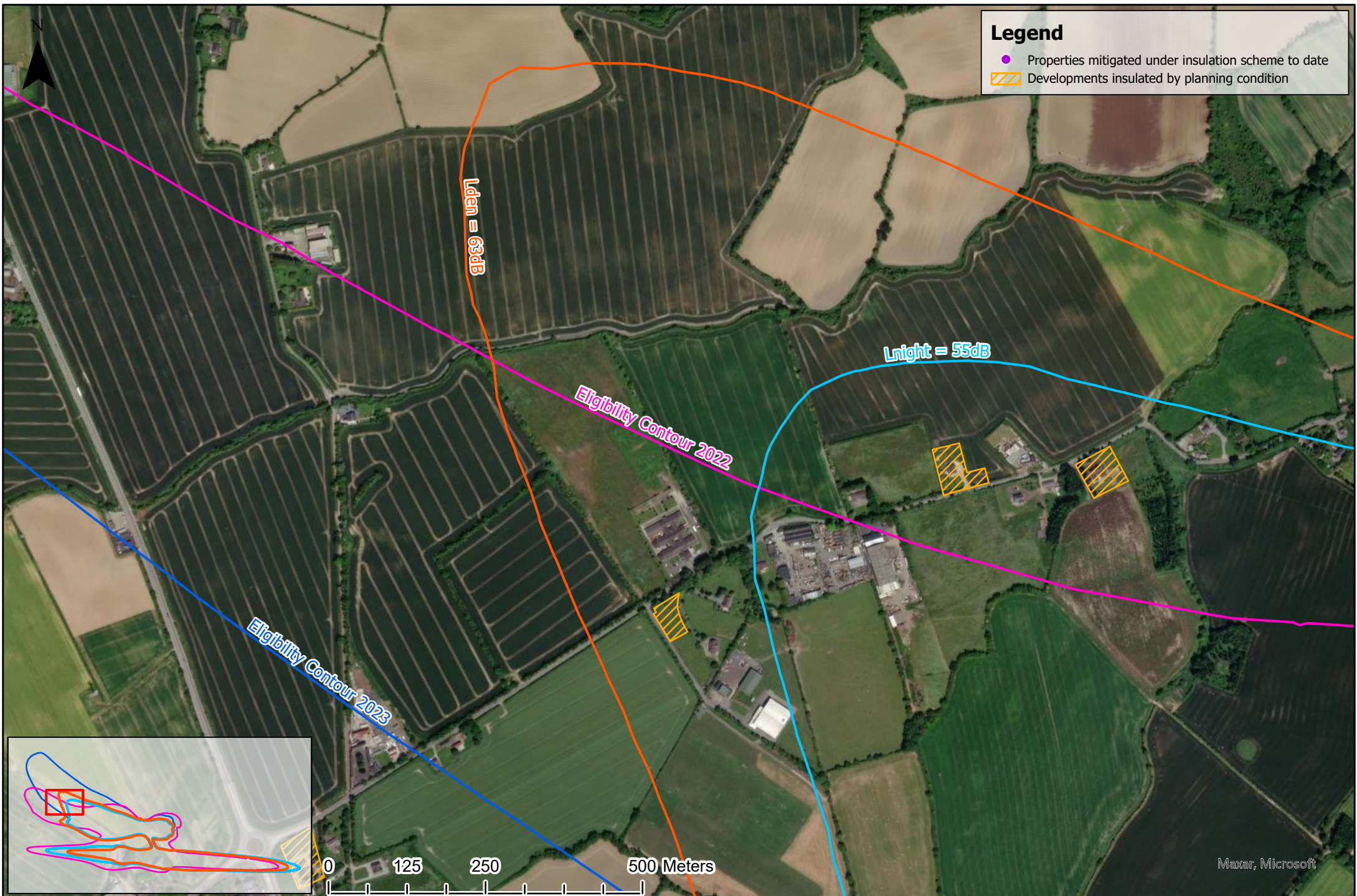
Comparison between Regulatory Decision 3rd Condition and F.I. Response  
Including 55dB (Lnight) and 63 dB (Lden) contours





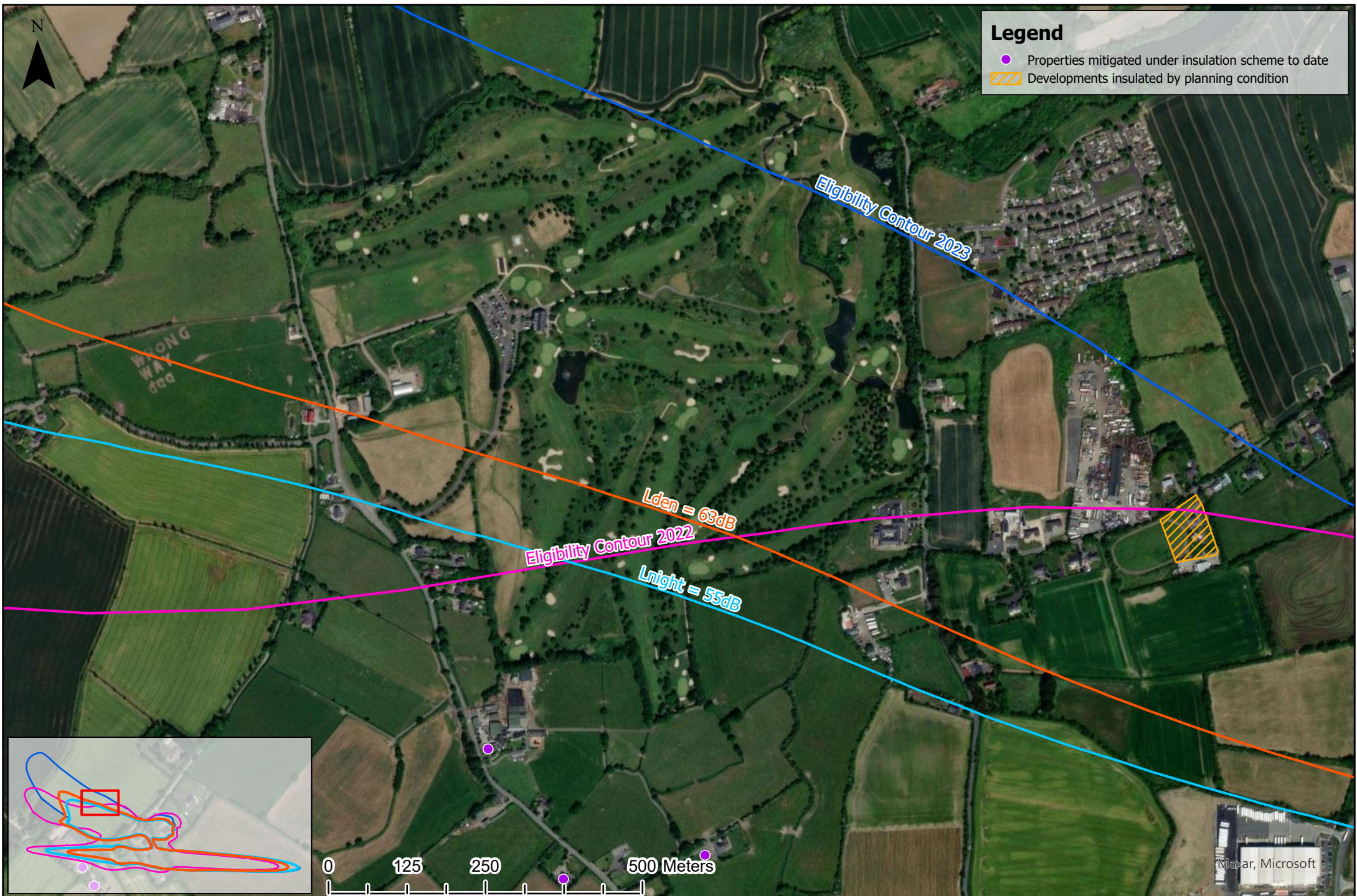
Comparison between Regulatory Decision 3rd Condition and F.I. Response  
Including 55dB (Lnight) and 63 dB (Lden) contours





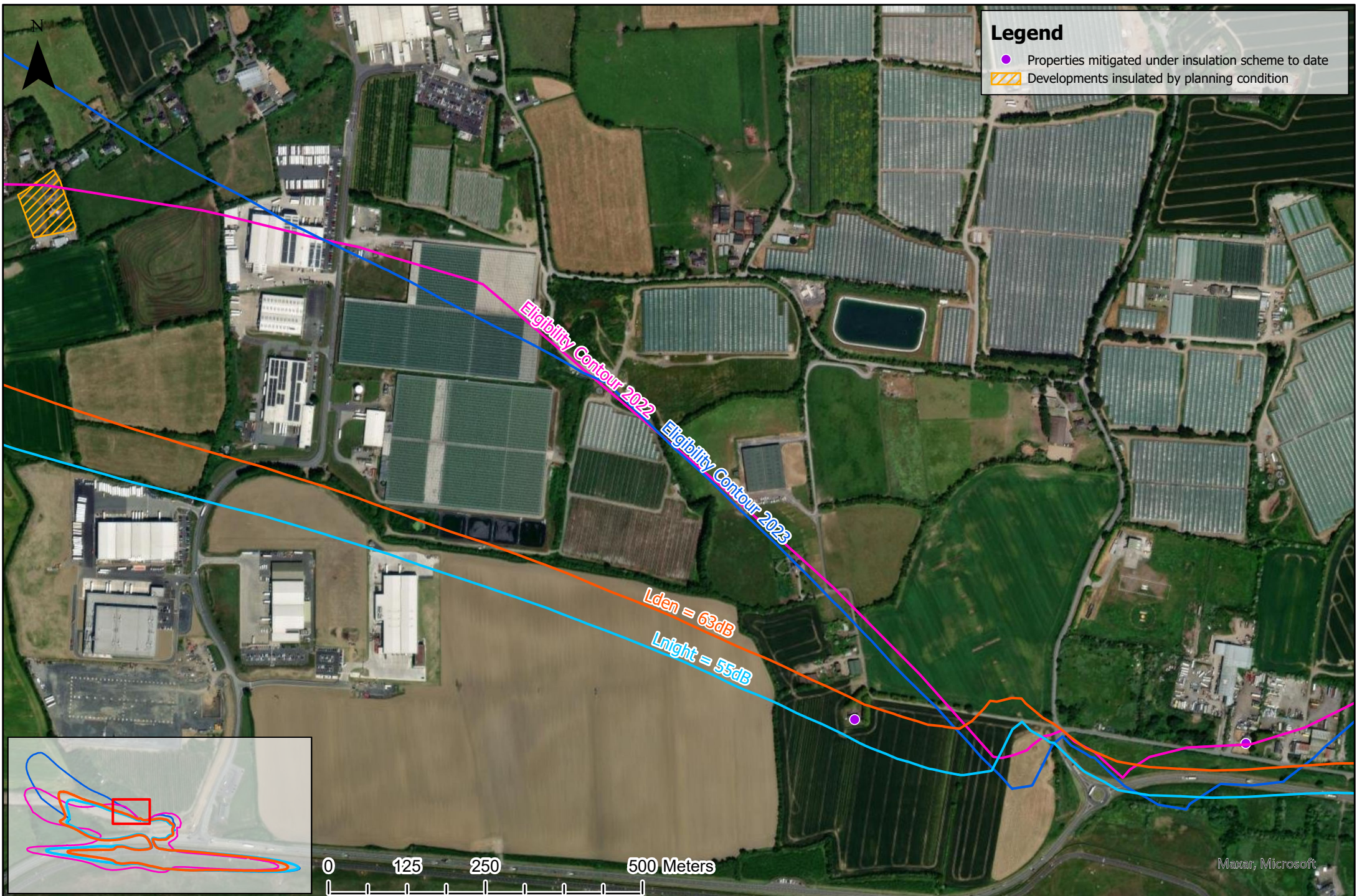
Comparison between Regulatory Decision 3rd Condition and F.I. Response  
Including 55dB (Lnight) and 63 dB (Lden) contours





Comparison between Regulatory Decision 3rd Condition and F.I. Response  
Including 55dB (Lnight) and 63 dB (Lden) contours





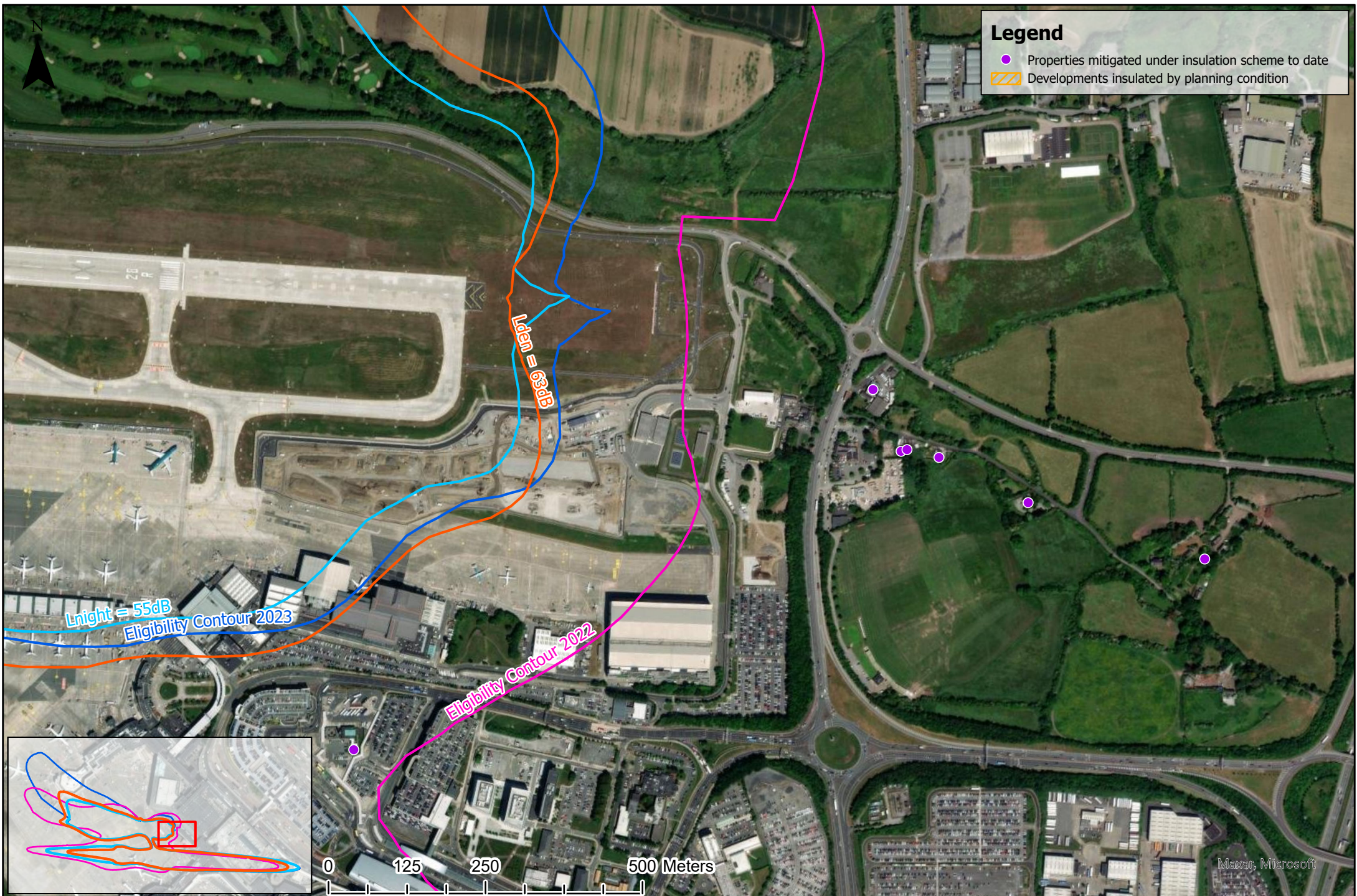
Comparison between Regulatory Decision 3rd Condition and F.I. Response  
Including 55dB (Lnight) and 63 dB (Lden) contours





Comparison between Regulatory Decision 3rd Condition and F.I. Response  
Including 55dB ( $L_{night}$ ) and 63 dB ( $L_{den}$ ) contours





Comparison between Regulatory Decision 3rd Condition and F.I. Response  
Including 55dB (Lnight) and 63 dB (Lden) contours





**Legend**

- Properties mitigated under insulation scheme to date
- ▨ Developments insulated by planning condition

Comparison between Regulatory Decision 3rd Condition and F.I. Response  
Including 55dB (Lnight) and 63 dB (Lden) contours





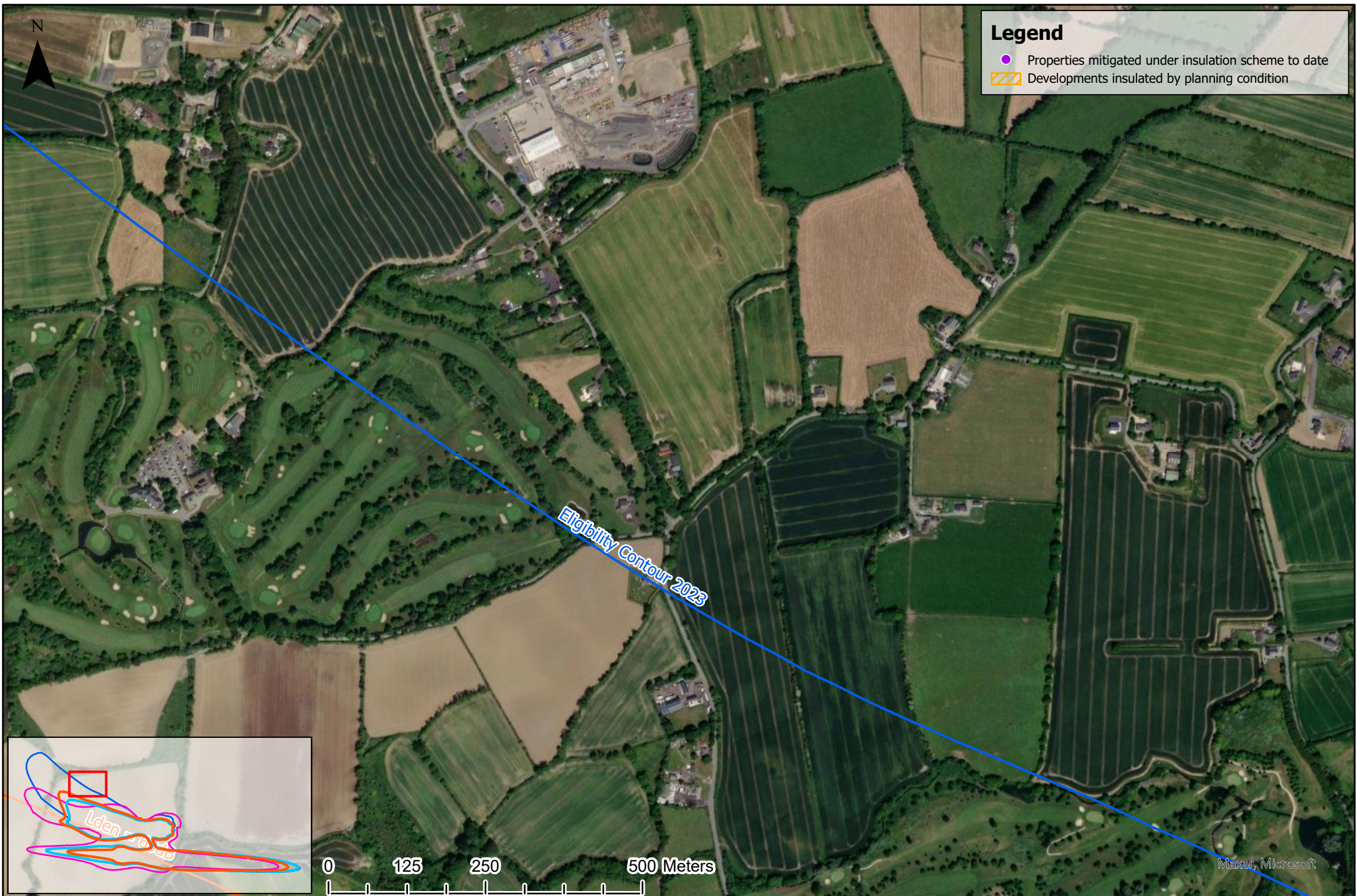
Comparison between Regulatory Decision 3rd Condition and F.I. Response  
Including 55dB (Lnight) and 63 dB (Lden) contours





Comparison between Regulatory Decision 3rd Condition and F.I. Response  
Including 55dB (Lnight) and 63 dB (Lden) contours





Comparison between Regulatory Decision 3rd Condition and F.I. Response  
Including 55dB (Lnight) and 63 dB (Lden) contours